

CENTER-SEAL BAG MAKING MACHINE

▪ ACM-43 SERIES



▪ ACM-43Q SERIES



Materials

- Sealable laminated film, thickness 40-150 μ

Unwind Section

- Upgraded dancer-roller section with 2-step film folding devices provides stable tension.

Bag Making

- More accurate and stable bag forming and center seal with 2-step film folding device.
- No overheating the material when machine stops, by using automatic life up mechanism for upperstand.
- Optimal sealing result by use of double sealing and cooling devices with individual temperature adjustment. Especially important for production in high speed.

The ACM-43Q is a more advanced version than ACM-43. In addition to what ACM-43 can produce, ACM-43Q can also do gusset sealing on the sides.



Computer Control Operation with, Touch-Screen

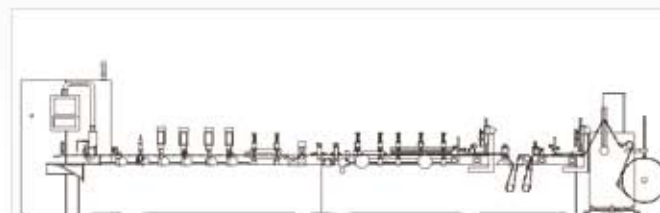
- Maintain a constant sealing time, to reduce time for quick set up and to reduce waste and changing machine speed without temperature adjustment.



- Touch-screen makes operation easier and faster

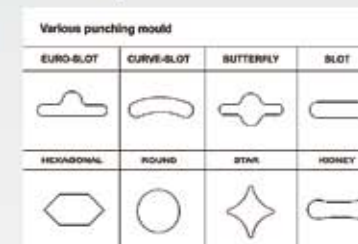
Optional Accessories

- 3" airshaft in unwind
- Pneumatic loading device (for unwind section)
- Edge position control (EPC)
- Paper strip feeding device
- Skip operation system for extending bag width
- Special K shape sealing mold



| | Net weight | Area required | Power |
|-------------------------|------------|---------------------------|-----------------|
| ACM-43 | 3400kg | L 12705 x W 4914 x H 1900 | 3.80V/15KW/287A |
| Max. parentweb width | | 820 mm | |
| Max. parentweb diameter | | 600 mm | |
| Center-seal bag width | | 50 ~ 400 mm | |
| Gusset-seal bag width | | 50 ~ 300 mm | |
| Max. bag length | | 400 mm (plain bag) | |
| Max. gusset depth | | 60 mm (each side) | |
| Machine speed | | 180 Cuts/min. | |

Other Optional Accessories



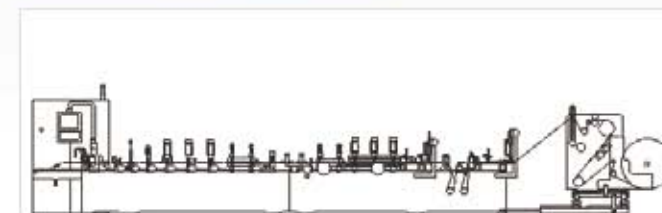
- Various punching mould



- Conveyer



- Zigzag cutter



| | Net weight | Area required | Power |
|---------------------------------------|------------|------------------------------|-----------------|
| ACM-43Q | 3400kg | L 12705 x W 4914 x H 2100 | 3.80V/15KW/287A |
| Max. parentweb width | | 1020 mm | |
| Max. parentweb diameter | | 600 mm | |
| Center-seal bag width | | 50 ~ 400 mm | |
| Max. bag length | | 50 - 400 mm (seal two times) | |
| Max. gusset depth | | 60 mm (each side) | |
| Bag width range for 4-border-seal bag | | 400mm minus 4*(Gusset depth) | |
| Machine speed | | 180 Cuts/min. | |